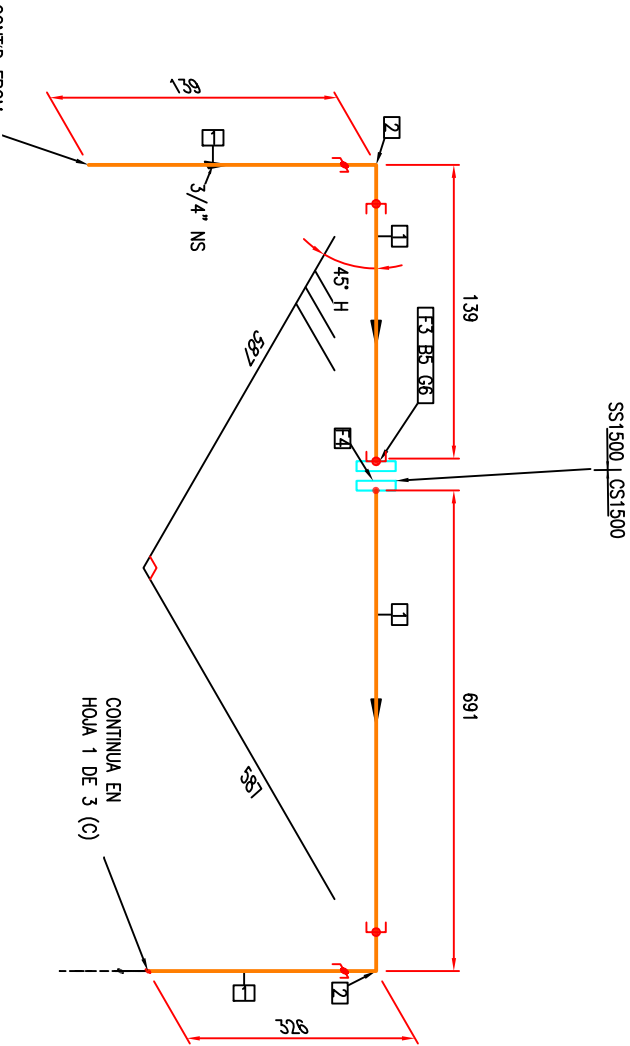


BILL OF MATERIALS			
ID	QTY	ND	DESCRIPTION
1	1.02M	3/4"	PIPE SEAMLESS, MATERIAL: API 5L GR. B, SCH 80/XS, BEVELLED ENDS/ASME B36.10.
2	2	3/4"	ELL 90, 3000 LB, SW, ASME B16.11, ASTM A105
3	1	3/4"	FLANGE SW, 300 LB, RF, ASME B16.5, ASTM A182 GR. 304L
4	1	3/4"	FLANGE SW, 300 LB, RF, ASME B16.5, ASTM A105
5	4	3/4"x115	STD BOLT 2HT HX NUT ASTM A320 GR.B8 CL2/A194 GR.8, 1500LB, ASME B18.2.1 & ASME B18.2.2
6	1	3/4"	DIELECTRIC JOINT, 1500LB, RF PHENOLIC, ASME B16.21
7	0.278M	3/4"	PIPE SEAMLESS, MATERIAL: ASTM A312 GR.304L, SCH 80/S, BEVELLED ENDS/ASME B36.19.



PROJECT NAME:			
Interconexion y optimización de la linea de alta presión en las ESRs -EE.SS. (1ra fase)			
TITLE:			
Interconexion Rack de Botellones y ESR63			
DRAWING NUMBER:			
P2275538-USIME1-ESR63-LT-0001			
LINE NO:	AREC:	UNIT:	TYPE:
3/4" NG-63810-CS2500G			
JOB NUMBER:	SCALE:	SHEET:	REV.
	N.T.S.	2D OF 4D	0